

Ford

Angle Adapter, Dozer Blade
Model 19-137

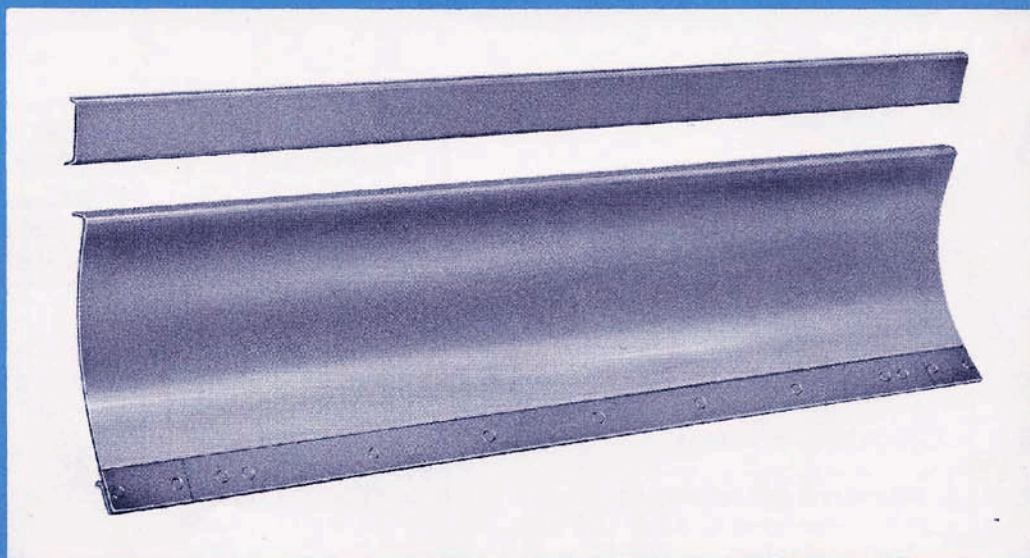
Spring Release, Dozer Blade
Model 19-138

6 Foot Universal Dozer Blade
Model 19-139

7 Foot Universal Dozer Blade
Model 19-140

Mounting Brackets, Dozer Blade
Model 19-141

PARTS BOOK



SEPTEMBER, 1958

TRACTOR AND IMPLEMENT DIVISION

Ford Motor Company

2500 East Maple Road, Birmingham, Michigan

Dozer Blade

MODEL INDEX

<u>Model No.</u>	<u>Description</u>	<u>Group No.</u>
19-137	Angle Adapter, Dozer Blade	1-3
19-138	Spring Release, Dozer Blade	1-2
19-139	6 Foot Universal Blade	1-1
19-140	7 Foot Universal Blade	1-1
19-141	Mounting Brackets, Dozer Blade	1-4

EXTRA EQUIPMENT

190033	Skid Shoe, Dozer Blade
195872	6 Foot Top Blade Extension, Dozer Blade
108396	7 Foot Top Blade Extension, Dozer Blade

"USAGE CHART"

		Standard & Heavy Duty Loader		Industrial & Super Duty Loader	
		Blade Position Straight	Blade Position Angle	Blade Position Straight	Blade Position Angle
19-139	6 Foot Universal Blade	X	X	X	X
19-140	7 Foot Universal Blade	X	X	X	X
19-141	Mounting Brackets	X		X	
19-112	Standard Attaching Kit	X	X		
19-137	Angle Adapter		X		X
19-138	Spring Release		Optional		Optional
190033	Skid Shoe	Optional	Optional	Optional	Optional
195872	6 Foot Top Blade Extension	Optional		Optional	
108396	7 Foot Top Blade Extension	Optional		Optional	

Dozer Blade

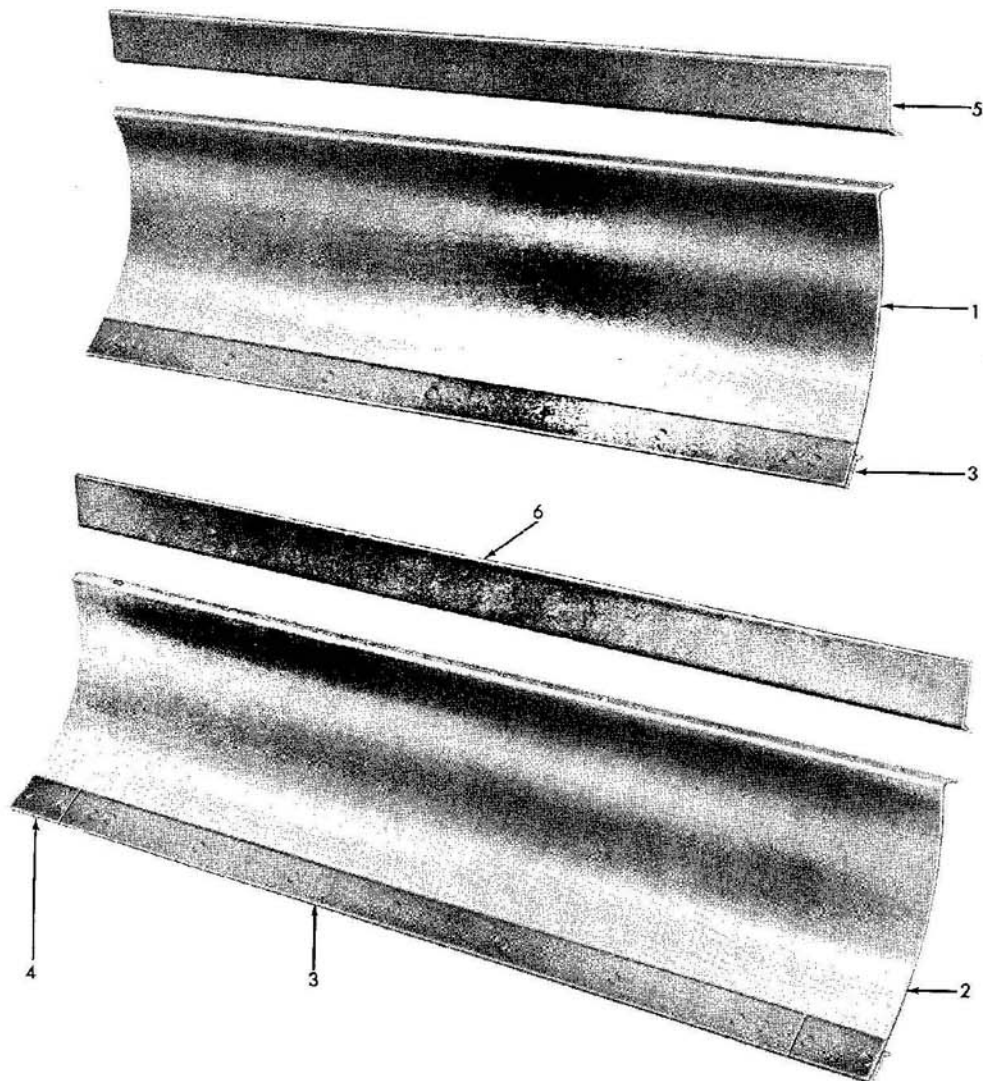


Figure 1 - Blade Assembly 6Ft and 7Ft Universal Dozer

FIG. 1	PART NO.	NAME AND DESCRIPTION	QTY. REQ.	
			19-139	19-140
<u>GROUP 1-1 BLADE ASSEMBLY</u>				
1	19-139	BLADE, 6Ft., Universal Dozer (WA)		
2	19-140	BLADE, 7Ft., Universal Dozer (WA)		
3	194827	LIP, Cutting	1	1
4	195861	LIP, Cutting .(Short)		2
-	300308-S8	BOLT, 1/2 - 13 x 1-1/2 Plow - Lip to Blade	9	13
-		BOLT, 1/2 - 13 x 1-3/4 Hex Hd, Soft - Bracket to Blade	4	4
-		LOCKWASHER, 1/2, NUT, 1/2 - 13 Hex	13	17
-	302515-S8	BOLT, 3/4 - 10 x 1-3/4 Carriage } Bracket to Stringer	2	2
-		LOCKWASHER, 3/4, NUT, 3/4 - 10 Hex }	2	2
<u>ACCESSORY EQUIPMENT</u>				
5	195872	TOP EXTENSION, 6Ft Dozer Blade	1	
6	108396	TOP EXTENSION, 7Ft Dozer Blade		1

Dozer Blade

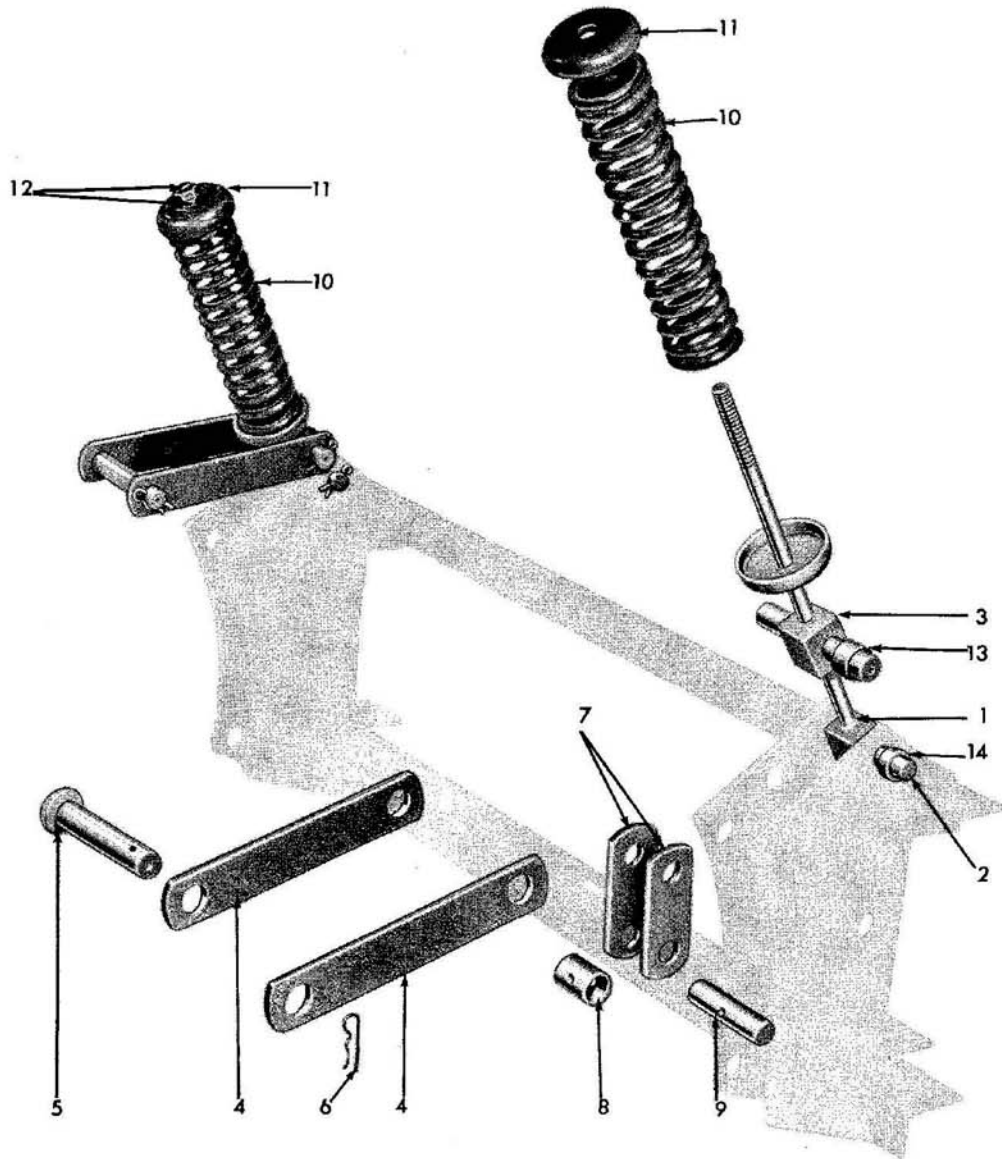


Figure 2 - Spring Release (For Dozer Blades)

FIG. 2	PART NO.	NAME AND DESCRIPTION	QTY. REQ.
		<u>GROUP 1-2 SPRING RELEASE</u>	<u>19-138</u>
-	19-138	SPRING RELEASE	1
1	108000	GUIDE, Spring (WA)	2
2	108008	PIN, 3/4 x 4.31 Drilled - Spring Guide to Frame	2
3	108003	TRUNNION, Spring Guide	2
4	108004	LINK, Spring Long	4
5	108031	PIN, 1.00 x 5.56 Headed Drilled)	2
6	358813-S8	PIN, 1/4 x 3-1/4 Spring) Link to Bracket	2

Dozer Blade

FIG. 2	PART NO.	NAME AND DESCRIPTION	QTY. REQ.
		<u>GROUP 1-2 SPRING RELEASE (Cont'd)</u>	19-138
7	108005	LINK, Spring, Short	4
8	108006	SPACER (Short Link)	2
9	108007	PIN, 1 x 3-3/4 Drilled) Short Link to Frame	2
-		PIN, 1/4 x 2 Cotter)	2
-		PIN, 3/16 x 1-1/2 Cotter - Trunnion & Spring Guide Pins . .	8
10	190001	SPRING, Release	2
11	190002	CAP, Spring	4
12	33947-S8	NUT, 5/8 - 18 Hex Jam	4
13	190335	RETAINER, Spring (Link Spacer) Trunnion	4
14	202336	SPACER, 3/4 Std Pipe x .46 (Pivot) - Spring Guide	4

Dozer Blade

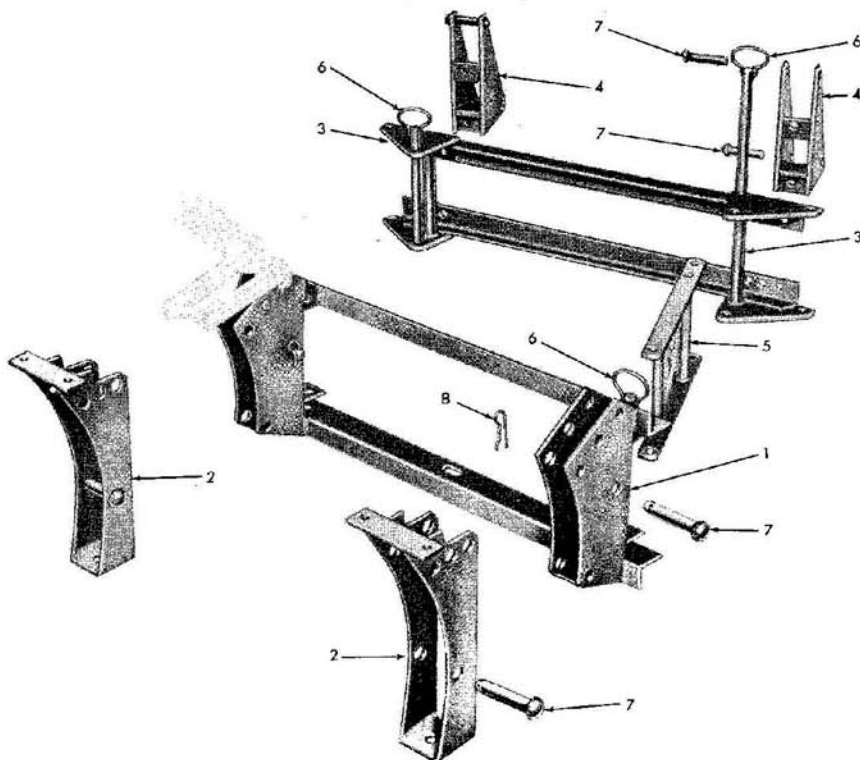


Figure 3 - Dozer Blade Angle Adapter

FIG.	PART NO.	NAME AND DESCRIPTION	QTY. REQ.
3			
		<u>GROUP 1-3 DOZER BLADE ANGLE ADAPTER</u>	<u>19-137</u>
-	19-137	DOZER BLADE ANGLE ADAPTER	1
1	108023	FRAME, Dozer Blade Pivot (WA)	1
2	108020	BRACKET, Blade Support (WA)	2
3	108017	PLATE, Angle (WA)	1
-	304806-S8	BOLT, 3/4 - 10 x 1-3/4 Heat Treated Hex) Angle to	4
-		LOCKWASHER, 3/4 and NUT, 3/4 - 10 Hex) Mounting Plate	4
4	108009	PLATE, Mounting (WA)	2
5	108012	SPACER, Blade Angle (WA)	1
6	108028	PIN, Drop (WA)	3
7	108030	PIN, 1.00 x 4.84 Headed Drilled)	8
8	358813-S8	PIN, 1/4 x 3-1/4 Spring) Blade Angle Adaptor	2
-		PIN, 1/4 x 1-1/2 Cotter)	6
<p>If this model is used with Model 19-138 Spring Release (For Dozer Blades) 2, Drilled Headed Pins (108030) and the Spring Pins (358813-S8) are placed in a reserve location as illustrated above, on the left side of Frame Assembly (108023). Otherwise, use as shown on the right side.</p>			

Dozer Blade

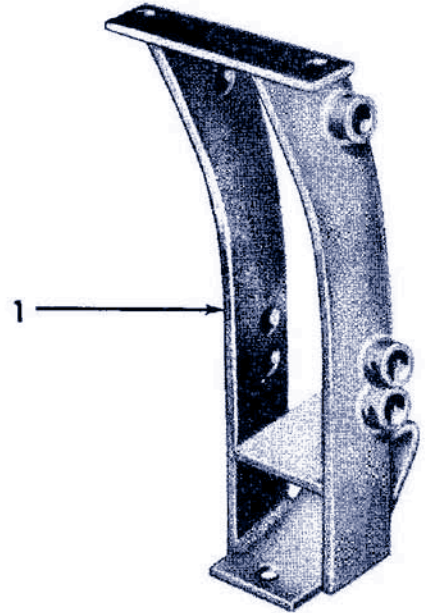
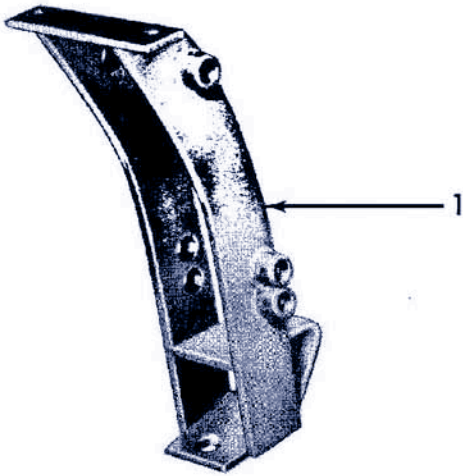


Figure 4 - Bracket Assembly - Dozer Blade Mounting

FIG. 4	PART NO.	NAME AND DESCRIPTION	QTY. REQ.
		<u>GROUP 1-4 BRACKET ASSEMBLY - DOZER BLADE MOUNTING</u>	<u>19-141</u>
-	19-141	BRACKET ASSEMBLY, Dozer Blade Mounting	1
1	195853	BRACKET, Pivot Plate & Stop (WA)	2
		For Straight Blade Applications only.	

Dozer Blade

NUMERICAL INDEX

19-137	Dozer Blade	4	108028	Pin	4
19-138	Spring Release	2	108030	Pin	4
19-139	Blade Assy	1	108031	Pin	2
19-140	Blade Assy	1	108396	Extension	1
19-141	Bracket Assy	5	190001	Spring	3
33947-S8	Nut	3	190002	Cap	3
108000	Guide	2	190335	Retainer	3
108003	Trunnion	2	194827	Lip Cutting	1
108004	Link	2	195853	Bracket	5
108005	Link	3	195861	Lip Cutting	1
108006	Spacer	3	195872	Top Extension	1
108007	Pin	3	202336	Spacer	3
108008	Pin	2	300308-S8	Bolt	1
108009	Plate	4	302515-S8	Bolt	1
108012	Spacer	4	304806-S8	Bolt	4
108017	Plate	4	358813-S8	Pin	2,4
108020	Bracket	4			
108023	Frame	4			